



UTP GROUP

(UTP PIPE AND THL PIPE)



Drawing from extensive experience, UTP Group, comprising UNIVERSAL TUBE & PIPE INDUSTRIES FZE and THL TUBE & PIPE INDUSTRIES LLC, excels as a Manufacturing Company with an annual production capacity of over 300,000 Metric Tons. UTP Group leads in High Frequency Induction Welded Steel Tubes and Pipes, operating from the UAE. A robust distribution network spans GCC, Europe, Australia, Canada, and North America. Rooted in quality, sustainability, and customer-centricity, UTP Group aspires to global leadership in the Steel Tube & Pipe Industry.

Industry Service:

UTP Group offers comprehensive services across diverse sectors such as construction, engineering, industrial, mechanical, OCTG, irrigation, and more. With state-of-the-art machinery, advanced equipment and a proficient workforce, they deliver tailored

solutions precisely aligned with the unique needs of each industry.

Products:

UTP Pipes manufactures Round pipes from sizes 1/2" to 6", Square tubes from size 19 x 19 to 80 x 80 and Rectangular tubes from size 40 x 20 to 100 x 50 in thickness. THL Pipe produces a wide range of round pipes ranging from 4" to 12", square tubes from 40 x 40 to 250 x 250, and rectangular tubes from 60 x 40 to 300 x 200 with a wide thickness range, from 1.5 mm to 12.7 mm, utilizing HRC grades such as S235J R, S275J 0, S275J 2, S355J 0, and S355J 2, tailored to meet your precise specifications.

Additionally, their specialized production lines focus on crafting structural tubes that adhere to stringent standards like ASTM A500, AS/NZS 1163, and EN10219, ensuring top-notch quality and compliance

OUR BRANDS : PIPING & TUBING SOLUTIONS ACROSS DIVERSE SECTORS



Qqa® comes as an exclusive brand for structural steel tubes, ERW (electric resistance welding) square tubes, rectangular tubes of any size and shape.

Qqa® has established itself as a leading brand in structural applications. Through high-frequency induction welding at rapid production speeds, we ensure seamless production with zero roll changes.

DIRECT FORMING TECHNOLOGY (DFT)

DFT, which stands for Direct Forming Technology, is a cutting-edge method used to create tubes.

By incorporating it into the mill range without altering the roll, this technology opens up the possibility of producing customized hollow sections.

A fully automatic and computerized process, speeds up setup time and allows easy operation with an intuitive user interface.

Square Hollow Sections (SHS)
Product Range: 20mm x 20mm to 200mm x 200mm
Thickness: 1.5mm to 12.5mm
Rectangular Hollow Sections (RHS)
Product Range: 40mm x 20mm to 250mm to 150mm
Thickness: 1.5mm to 12.5mm

REASONS TO CHOOSE

Time Saver

Enables quick delivery by welding at high production speed.

Tailor-made Solutions

Manufacturing hollow sections in custom sizes and delivering goods of excellent quality.

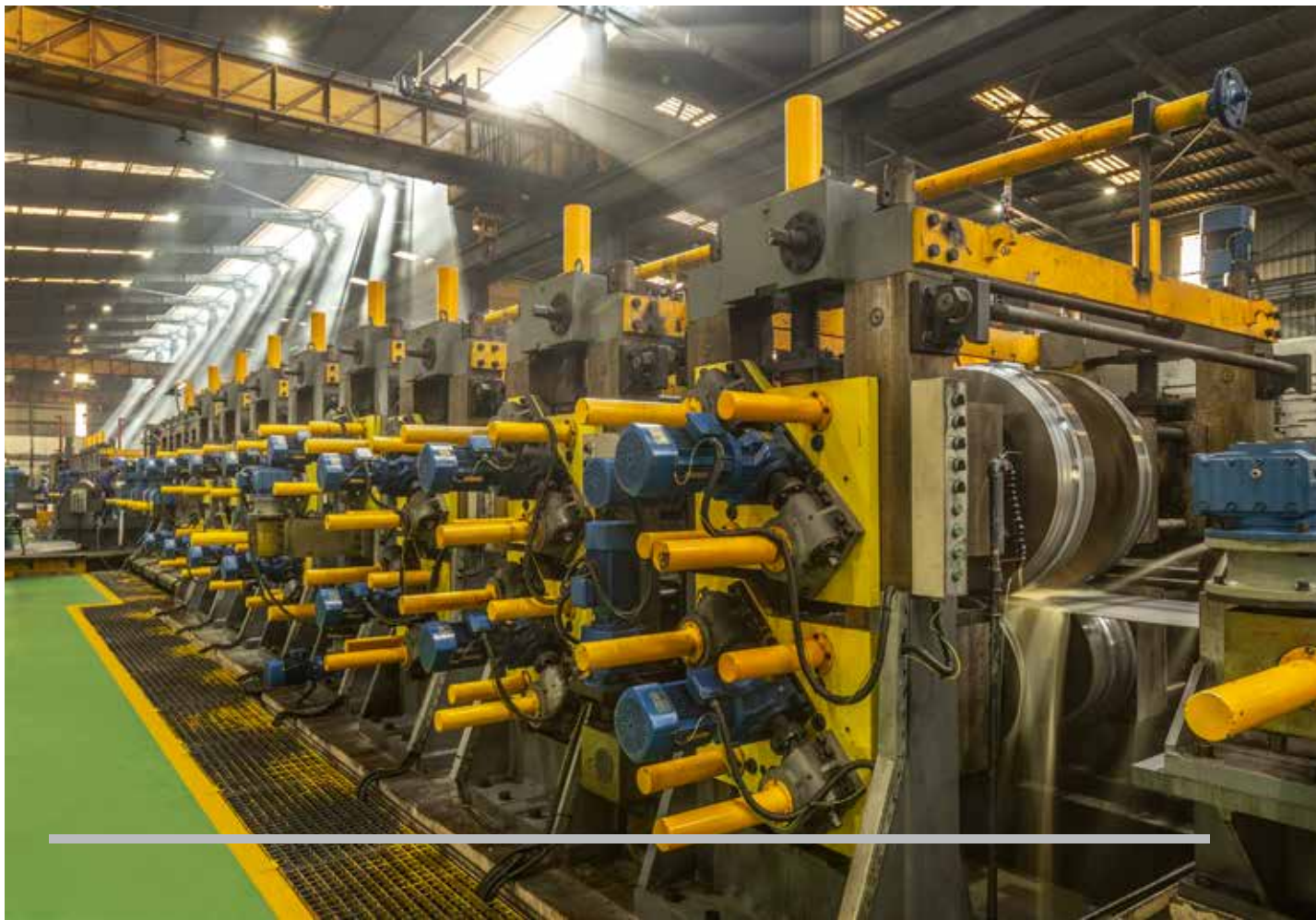
Accuracy

Proven design, automatic and computerized process enabling technical perfection.

Uniformity

Attaining technical precision and ensuring corner radius control are facilitated through autonomous process control and computerization.

With precise engineering and advanced manufacturing processes, we ensure the pipes meet the necessary industry specifications, ensuring optimal performance and durability.





Magnus® brand is synonymous with quality, reliability, and adherence to strict safety regulations.

Magnus® is committed to being a trusted partner for construction companies, contractors, and engineers who prioritize the safety and protection of their projects.

By choosing Magnus® ERW pipes for fire sprinkler piping systems, professionals can have peace of mind, knowing they are investing in robust, reliable, and compliant solutions that will enhance the fire safety measures of their buildings.

In fire sprinkler systems, steel pipes are commonly connected using various methods such as **threaded, grooved, swaged, or plain-end fittings.**

Among these options, grooved fittings are often preferred as they offer the advantage of faster

installation, making them the primary choice.

i Typically, steel pipes with a diameter of 2.0 inches and smaller are joined using threaded or plain-end fittings.

i Steel pipes measuring 2.50 inches and larger are typically connected using threaded, swaged, or grooved fittings.

BENEFITS

- Exceptional durability, strength, and the ability to withstand high pressures of heat and velocity, making them highly suitable for fire-resistant applications.
- Being corrosion resistant, it can withstand prolonged exposure to water and gas without compromising its structural integrity.
- Resilient to heavy shock and vibrations, making them the preferred choice for construction and maintenance projects that experience significant traffic or footfall.

- Steel's malleability allows for easy bending, forming, and fabrication, enabling it to be manufactured into various shapes, sizes, and configurations to suit specific requirements.

ASTM A795 Standard Specification for Black and Hot-Dipped Zinc-Coated (Galvanized) Welded and Seamless Steel Pipe for Fire Protection Use

ASTM A53, Standard Specification for Pipe, Steel, Black and Hot-Dipped, Zinc-Coated, Welded and Seamless

ASTM A135, Standard Specification for Electric-Resistance-Welded Steel Pipe

Our sprinkler pipes of grades ASTM A53 / ASTM A135 / ASTM A795 Grade A & B pipes are approved by UL & FM for the sprinkler system.

OUR PRODUCTS: GLOBALLY EMBRACED EXCELLENCE

Manufacturing Standards

ASTM A53 Gr. A & B, ASME S A53 Gr. A & B, ASTM A135 Gr. A & B, ASTM A795 Gr. A, AS 1074, AS/NZS 1163, API 5L A25 up to X70 PSL 1, API 5L Gr. B up to X80 PSL 2, API 5CT Gr. H40 & J55, EN 10255, EN 10217-1, EN 10217-2, ASTM F1083

Applications

- › Agriculture
- › Cattle Pen Tubes
- › Chilled Water Systems
- › Structural Tubes
- › Scaffolding
- › Fencing
- › Fire Fighting Applications
- › Gas & Water Tubes
- › Green House Tubes
- › Handrails
- › Lighting Poles
- › Parking Posts
- › Space frames
- › Sprinkler Systems & Submersible/Deep Well
- › Telecommunication Poles
- › Tubular Poles
- › Oil and Gas
- › Casing & Tubing and more.

Manufacturing Standards

EN39

Applications

- › Scaffolding & Construction

Manufacturing Standards

AS/NZS 1163, ASTM A 500, EN10219, ASTM F0183

Applications

- › Mechanical and General Engineering

Our Specialized Products

Black and Galvanized Structural Tubes

Manufactured according to ASTM A500, AS/NZS 1163, EN10219 from 15mm to 150mm, the tubes are suitable for Construction and Structural Use

Conveyor Roller Tubes

Conveyor Roller Tubes are manufactured in size 101mm, 127mm, 152mm & 165mm as per SANS 657-3

Black & Galvanized Rolled Grooved Tubes

Roll Grooved in Victaulic Grooving Machines in Sizes 1" to 12" in pipe thicknesses as per SCH.10 & SCH.40 M&H.

Black and Galvanized Swaged Posts

Swaged pipes are manufactured in sizes 20mm, 25mm, 32mm and 40mm in thickness from 2.0mm to 2.6mm with swaged neck-length between 90mm to 100mm on both ends and can be used for fencing and as hand-rails.

Pre-galvanized Hollow Sections

Hollow Sections are manufactured from the pre-galvanized coils and strips in different sizes with thicknesses from 1.5mm to 4.0mm.

They are suitable for Fencing with Top Coats and Structural Usage:

- › Rounds - 15mm upto 100mm
- › Squares (mm) - 19x19, 20x20,

25x25, 30x30, 35x35, 38x38, 40x40, 50x50, 60x60, 75x75, 80x80

- › Rectangles (mm) - 40x20, 50x25, 50x30, 60x30, 60x40, 75x50, 80x40, 100x50

Water based Red Painted Pipes

Round pipes from size ½" to 6" manufactured as per EN 10255 & EN 10217-1 in Medium & Heavy series painted with water based Red color paint for applications in Fire protection industries, HVAC and Mechanical Engineering applications.

Water Based Blue Painted SHS & RHS

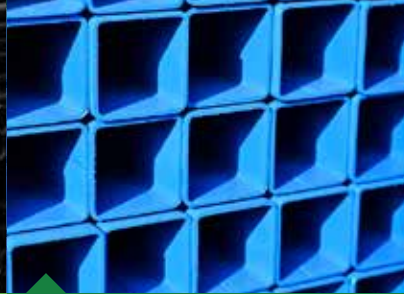
SHS & RHS manufactured as per AS/NZS 1163 in Grades C 250 / C 250 L0, C 350 / C 350 L0, C 450 / C 450 L0 are painted with water based blue color paint from sizes 20x20 to 150x150 & 50x25 to 150x100 for Structural applications.

Enamel Based Black Painted CHS

Manufactured as per ASTM A53, ASME A53, ASTM A135, ASTM A795 from ½" to 6" for Sch 10, Sch 40 & Sch 80

Painted & Galvanized Threaded & Socketed Pipes

Manufactured in sizes ½" to 6" for Sch 10, Sch 40 & Sch 80 M&H Casing & Tubing (OCTG) Licensed by the API to produce API monogrammed 5CT products in H40 and J55 with both casing and tubing suitable for upgradation to Grade L-80 and N-80

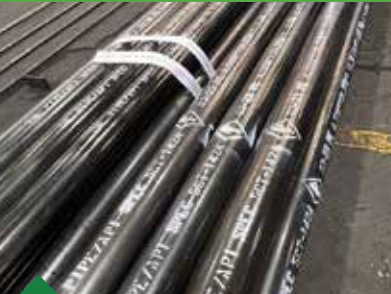


Black Painted Grooved Pipes

Swaged Pipes

Black Painted Round Pipes

Blue Painted SHS and RHS



Galvanized Round Pipes

Red Painted Pipes

Steel Casing and Tubing Pipes

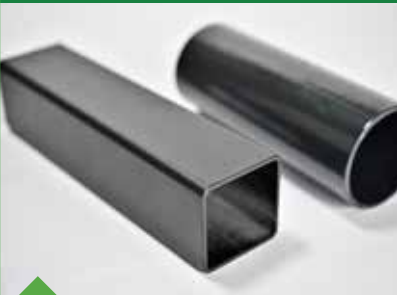
Threaded with Socket



Rectangular Tubes



Water Based Red Painted Pipes



Powder Coated Pipes & Tubes



MS Pipe



Painted & Threaded Pipes



Pre-Galvanized Rectangular Tubes